

XW+

hybrid inverter/charger

One solution for global power needs

Product at a glance

XW+ is an adaptable single-phase and three-phase inverter/charger system with grid-tie functionality and dual AC power inputs. Compatible solar charge controllers, monitoring, and automated generator control modules enable further compatibility. From a single XW+ unit to clusters up to 76.5 kW, the XW+ is a scalable system that allows for the integration of solar capacity as required. Adaptable and scalable, the Schneider Electric XW+ system is a complete solution for grid-interactive and off-grid, residential and commercial, solar and backup power applications.



XW+

Designed for reliability

- Extensive quality and reliability testing
- Highly accelerated life testing
- Globally proven and recognized field performance

Flexible

- Single or three-phase off-grid systems from 7.0 kW to 76.5 kW (30 minutes rating at 25 °C)
- Supports DC-coupled and AC-coupled off-grid and grid-tie architectures
- Supports charging of lithium ion battery packs

Easy to service

- Monitor, troubleshoot, or upgrade firmware with Insight

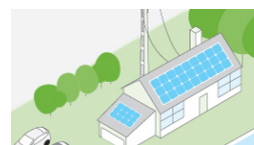
Easy to install

- System configures quickly into compact, wall-mounted system
- Integrates both grid and generator power with dual AC inputs
- Balance-of-system components integrates battery bank, solar charge controllers, and generators
- Commission the entire system with PC software tool and Insight

Product application



Residential grid-tie solar with backup power



Self-consumption



Off-grid solar



Backup power



Community electrification

XW+ series (120/240 V)

Device short name	XW+ 5548 NA (Discontinued)	XW+ 6848 NA
Inverter AC output (standalone)		
Output power (continuous) at 25°C	5500 W	6800 W
Overload 30 min/60 sec at 25°C	7000 W/9500 W	8500 W/12000 W
Output power (continuous) at 40°C	4500 W	6000 W
Maximum output current 60 seconds (rms)	82 A (120 V); 41 A (240 V)	102 A (120 V); 52 A (240 V)
Output frequency (selectable)	50/60 Hz	50/60 Hz
Output voltage	L-N: 120 V +/- 3%; L-L: 240 V +/- 3%	L-N: 120 V +/- 3%; L-L: 240 V +/- 3%
Total harmonic distortion at rated power	< 5 %	< 5 %
Idle consumption search mode	< 8 W	< 8 W
Input DC voltage range	42 to 60 V (48 V nominal)	42 to 60 V (48 V nominal)
Maximum input DC current	150 A	180 A
Charger DC output		
Maximum output charge current	110 A	140 A
Output charge voltage range	40 – 64 V (48 V nominal)	40 – 64 V (48 V nominal)
Charge control	Three stage, two stage, boost, custom	Three stage, two stage, boost, custom
Charge temperature compensation	Battery temperature sensor included	Battery temperature sensor included
Power factor corrected charging	0.98	0.98
Compatible battery types	Flooded (default), Gel, AGM, Lithium ion, custom*	Flooded (default), Gel, AGM, Lithium ion, custom*
Battery bank range (scaled to PV array size)	440 – 10000 Ah	440 – 10000 Ah
AC input		
AC 1 (grid) input current (selectable limit)	3 – 60 A (60 A default)	3 – 60 A (60 A default)
AC 2 (generator) input current (selectable limit)	3 – 60 A (60 A default)	3 – 60 A (60 A default)
Automatic transfer relay rating/typical transfer time	60 A/8 ms	60 A/8 ms
AC input voltage limits (bypass/charge mode)	L-N: 78 - 140 V (120 V nominal); L-L: 160 - 270 V (240 V nominal)	L-N: 78 - 140 V (120 V nominal); L-L: 160 - 270 V (240 V nominal)
AC input frequency range (bypass/charge mode)	55 – 65 Hz (default) 52 – 68 Hz (allowable)	55 – 65 Hz (default) 52 – 68 Hz (allowable)
AC grid-tie output		
Grid sell current range on AC1(selectable limit)	0 to 40 A (120 V) / 0 to 20 A (240 V)	0 to 48 A (120 V) / 0 to 27 A (240 V)
Grid sell voltage range on AC1 (auto adjusts entering sell mode)	L-N: 105.5 to 132 +/- 1.5 V; L-L: 211 to 264 +/- 3.0 V	L-N: 105.5 to 132 +/- 1.5 V; L-L: 211 to 264 +/- 3.0 V
Grid sell frequency range on AC1 (auto adjust entering sell mode)	59.4 to 60.4 +/- 0.05 Hz	59.4 to 60.4 +/- 0.05 Hz
Efficiency		
Peak	95.7%	95.7%
CEC weighted efficiency	93.0%	92.5%
General specifications		
Part number	865-5548-01 (Discontinued)	865-6848-01
Product/shipping weight	53.5 kg (118.0 lb)/75.0 kg (165.0 lb)	55.2 kg (121.7 lb)/76.7 kg (169.0 lb)
Product dimensions (H x W x D)	58 x 41 x 23 cm (23 x 16 x 9 in)	58 x 41 x 23 cm (23 x 16 x 9 in)
Shipping dimensions (H x W x D)	71.1 x 57.2 x 39.4 cm (28.0 x 22.5 x 15.5 in)	71.1 x 57.2 x 39.4 cm (28.0 x 22.5 x 15.5 in)
IP degree of protection	NEMA Type 1 Indoor	
Operating air temperature range	-25°C to 70°C (-13°F to 158°F) (power derated above 25°C (77°F))	
Warranty (depending on the country of installation)	Please refer to our website, SEsolar.com for the latest version of the warranty statement.	
Features		
System monitoring and network communications	Available	
Intelligent features	Grid sell, peak load shave, generator support, prioritized consumption of battery or external DC energy	
Auxiliary port	0 to 12 V, maximum 250 mA DC output, selectable triggers	
Off-grid AC coupling	Frequency control	
Regulatory approval		
Safety	UL1741, CSA 107.1	
EMC directive	FCC and Industry Canada Class B	
Interconnect	IEEE 1547 and CSA 107.1	
Compatible products		
Conext XW+ Mini Power Distribution Panel	865-1013-01	
Conext XW + Power Distribution Panel	865-1015-01	
Conext MPPT 60 150	865-1030-1	
Conext MPPT 80 600	865-1032	
Conext System Control Panel	865-1050	
Conext Automatic Generator Start	865-1060	
Conext Battery Monitor	865-1080-01	
Conext Battery Fuse Combiner Box	865-1031-01	
Conext Configuration Tool	865-1155-01	

Specifications are subject to change without notice.

Schneider Electric
35 rue Joseph Monier
92500 Rueil-Malmaison, France
Tel: +33 (0)1 41 29 70 00

Life Is On

Schneider
Electric